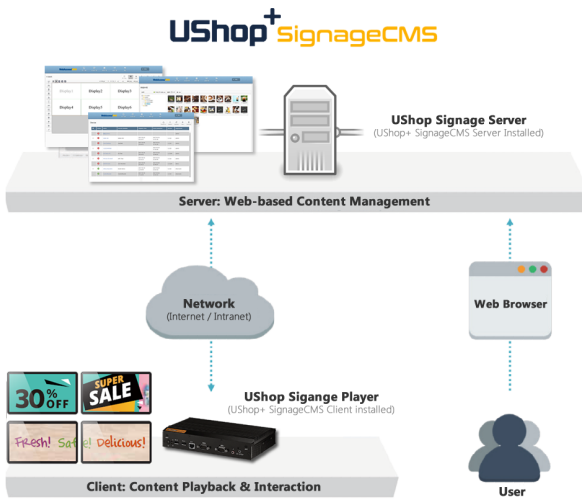


UShop Signage Server

(Interactive Digital Signage Solution)



Features

- Web-based digital signage content management system
- Edit and dispatch programs within 3 steps with an easy-to-use interface
- Support more than 30 media formats
- Support multi-screen displays and content cross-screen (video wall)
- Provide remote device management
- Offer system backup and recovery
- 1 Server supports up to 500 UShop Signage Players

Introduction

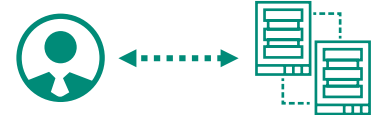
UShop signage server is designed for simplifying your network operations, providing cost-effective performance and delivering state-of-the-art content distribution solutions. The product includes server system and server license (software only) that offers complete flexibility and control over displays and content.

UShop Signage Server Build-Up and User Operating Workflow

Step1: Install the Server Software

Step2: Setup UShop Signage Player

Step3: All Operating via Web Browser



Get Start

- Install all needs environment by 1-click
- Login into web page and start to create user account or group (optional)

Link-Up the Player and Server

- Setup the server static IP address
- Login server to create the client by ID

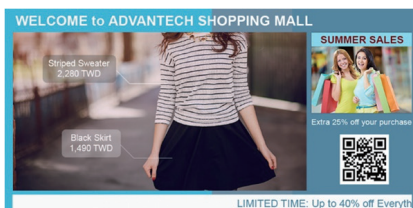
Functions Ready to Go

- Program layout editing
- Program scheduling and bulk dispatch
- Client monitoring and power management
And more...

Key Functions

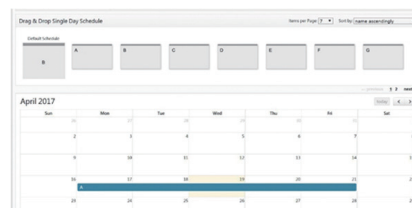
Program Layout Editor

Easily drag and drop the materials to resize or reposition with real-time preview, and support the content cross-screen display.



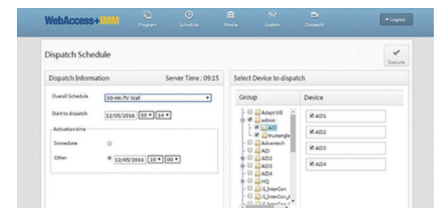
Scheduling Settings

Able to setup multiple programs in different time period, and scheduling in calendar. All these can be save into different script.



Bulk Dispatch

Mark multiple client or group to dispatch all in one action, also able to scheduling the dispatch or activation time.



Specifications

UShop Signage Server

| | | | |
|--------------------------|--------------------------|---|---|
| UShop+ SignageCMS Server | Program | Directory Tree Display | Based on directory tree, easily to add, move and delete programs |
| | Management | Thumbnail Preview | Easier to find the right program for the next action |
| | Layout Editor | Displays Configuration | Displays' numbers, layout and resolutions setup. (support landscape & portrait) |
| | | Friendly Interface | What you see is what you get, real-time content thumbnail preview |
| | | Drag and Drop | Easily to reposition or resize by mouse click |
| | | Playlist | Setup the content list, and replay automatically |
| | | Background Color, Image, Music | Can be custom based on preferences |
| | Schedule | Rich Media Widget Support | Including image, audio, video, text, file, HTML, YouTube, RTSP and more |
| | | Daily Schedule | Can be setup the programs by time period in a day. |
| | Management | Schedule by Calendar | Based on daily schedule, setup calendar for different schedule in specific date |
| | | Schedule Management | Create, Copy, Delete or Export |
| | | Appointment Dispatch | Scheduling the dispatch or activation date and time |
| | Remote Client Management | Bulk Dispatch | Unlimited |
| | | Client Group Setting | Group the client to management more efficiency |
| | | Remote Power On/Off | Power management via Intel AMT or Wake on LAN, and can be scheduled |
| | | Remote Software Update | Get all clients version and update remotely |
| | | Client Status Monitoring | Including the Heartbeat, System and Performance information |
| | | Real-Time Screenshot Monitoring | Get the real-time client's screenshot and refresh automatically |
| | System | Authorization Setting | User can be setup with different functions permission or grouping to separate fully |
| | Management | Simultaneous Editing | System are able to accept multiple user operating at the same time |
| System Backup/ Recovery | | Simply backup/restore the server system by 1-click | |
| Resume Download | | In case the network is unstable or client going offline | |
| Differential Download | | Saving the bandwidth | |

UShop Signage Player (Connected to UShop Signage Server)

| | | | | |
|--------------------------|-----------------|---------------------------|---|--|
| UShop+ SignageCMS Client | Content | Audio and Video Output | SD, HD, Full HD, 4K (*depend on device performance) | |
| | Playback Engine | Displays Control | Portrait, Landscape display | |
| | | Multi-Screen Display | Unlimited | |
| | | Remote Software Update | Apply the new version update from server side | |
| | | Client status Report | Heartbeat, System and Performance information report | |
| | | Rich Media Format Support | Image: JPG, PNG, BMP, GIFVideo: MP4, AVI, WMV, MOV, MPG, MKV (*depends on Codec)Text: Text, Scrolling Text, Bulletin, TimeAudio: MP3, WMA, WAVFile: PPT*, PPS*, PDF, SWF (Flash)Text: Interfacing TXT, EXCEL, RSS (1.0)Others: Web URL, HTML, YouTube, RTSP*3rd-party plug-in are required for content playback | |

UShop+ SignageCMS Sever

Minimum Requirement

- OS: Windows 7 or above, Windows Server 2008 or above
- CPU: Intel Core i5 or above
- RAM: 8GB or above
- Hard Disk: 500GB or above (depend on media file size)
- Port: 80 (HTTP), 1883 (MQTT), 16992 (Intel AMT)
- IP Address: Static IP Address is required

*Apache HTTP Server and PostgreSQL are required for Server installation, please do not setup with different software system to avoid conflict.

UShop Signage Player



Lite



Standard



Pro

Ordering Information

UShop Signage Server

| Product Name | Part Number | Description |
|----------------|-------------------|---|
| Server License | 968SPUDSS0 | UShop+ SignageCMS Server |
| Server System | AiMC-342UDS-G1E-C | Intel Core i5/8GB RAM/1TB HDD UShop+ SignageCMS Server |

UShop Signage Player (UShop+ SignageCMS Client Installed)

| Product Name | Part Number | Description |
|----------------------------|-------------------|---|
| Lite (1-2 displays) | UBX-310UDS1-G1E-C | Intel Celeron J1900/4GB RAM 500GB HDD (G1E) |
| | UBX-310UDS1-S1E-C | 64GB SSD (S1E) |
| Standard (1-4 displays) | DS-570UDS1-G1E-C | Intel Celeron J1900/4GB RAM/GT730M 500GB HDD (G1E) |
| | DS-570UDS1-S1E -C | 64GB SSD (S1E) |
| Pro (1-6 displays) | DS-980UDS1-G1E-C | Intel Core i7-6700TE/4GB RAM/GT730 500GB HDD (G1E) |
| | DS-980UDS1-S1E -C | 64GB SSD (S1E) |